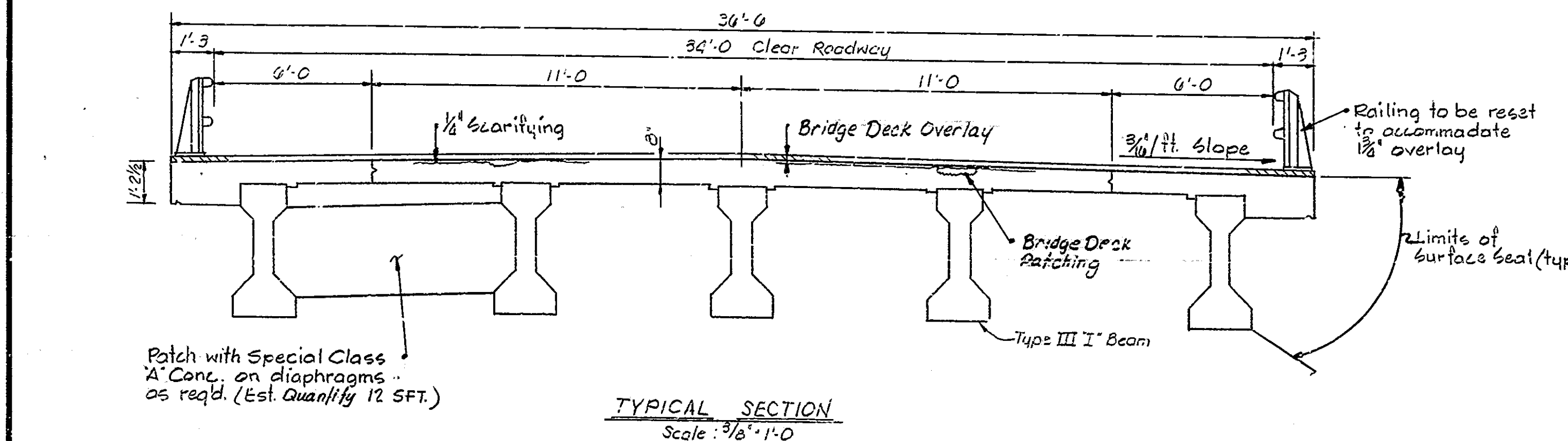
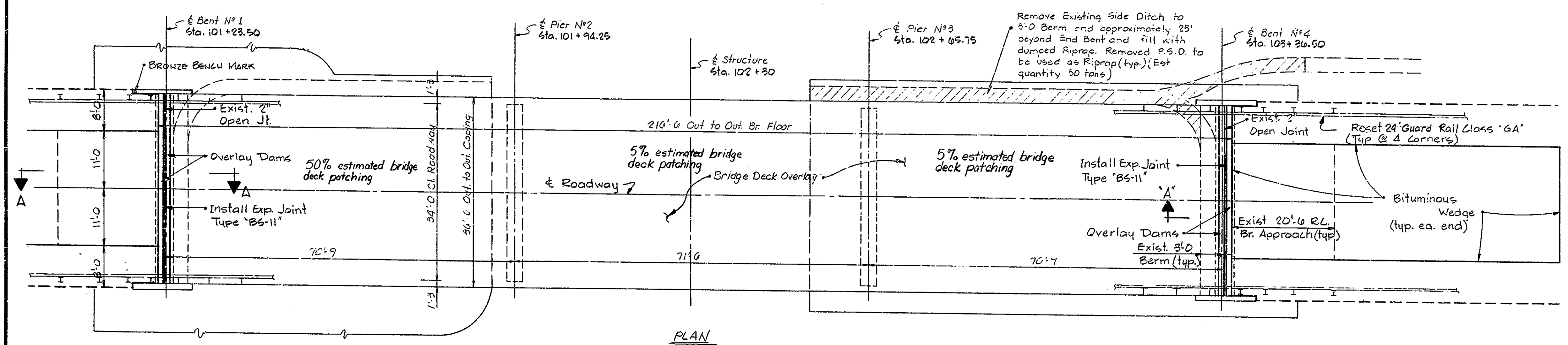


STANDARD DRAWINGS		
BR. STD.	RD. STD.	PURPOSE
BR1		ALUMINUM BRIDGE RAILING
BR2		ALUMINUM BRIDGE RAILING DETAILS
CB3		TYPE IA JOINT
	SHT. MB2	PAVED SIDE DITCH DETAILS
	SHT. GR4	GUARD RAIL CLASS GA
	SHT. GR5	ALUMINUM GUARD RAIL DETAILS
	SHT. CB2	TEMPORARY CONCRETE BARRIER
	SHT. 9	SIGN DETAILS
	SHT. 1	DETOUR SIGNS
	SHT. 2A	TYPE III BARRICADES
	SHT. 3	SIGNS



Notes:  
 For Construction Procedure, General Notes,  
 Material Notes, & Section A-A, see Dwg. D2.

**BRIDGE DECK RECONSTRUCTION AND OVERLAY  
 GENERAL PLAN**

CONTINUOUS PRESTRESSED REINFORCED CONC. I-BEAM BRIDGE  
 3 SPANS - 70'-9" - 71'-6" - 70'-9" - SQUARE 34'-0" ROADWAY  
 OVER LAUGHERY CREEK ON S.R. 48

**INDIANA STATE HIGHWAY COMMISSION  
 RIPLEY COUNTY**

SCALE: - 3/32" = 1'-0" U.N. DATE: - 6-20-79

SUBMITTED FOR APPROVAL: *Revised*

DRAWING: D1 OF D2 SHEET: 2 OF 14

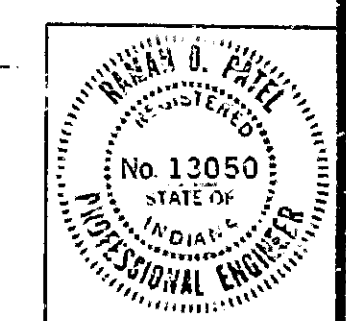
PROJECT: - SR5069(S)

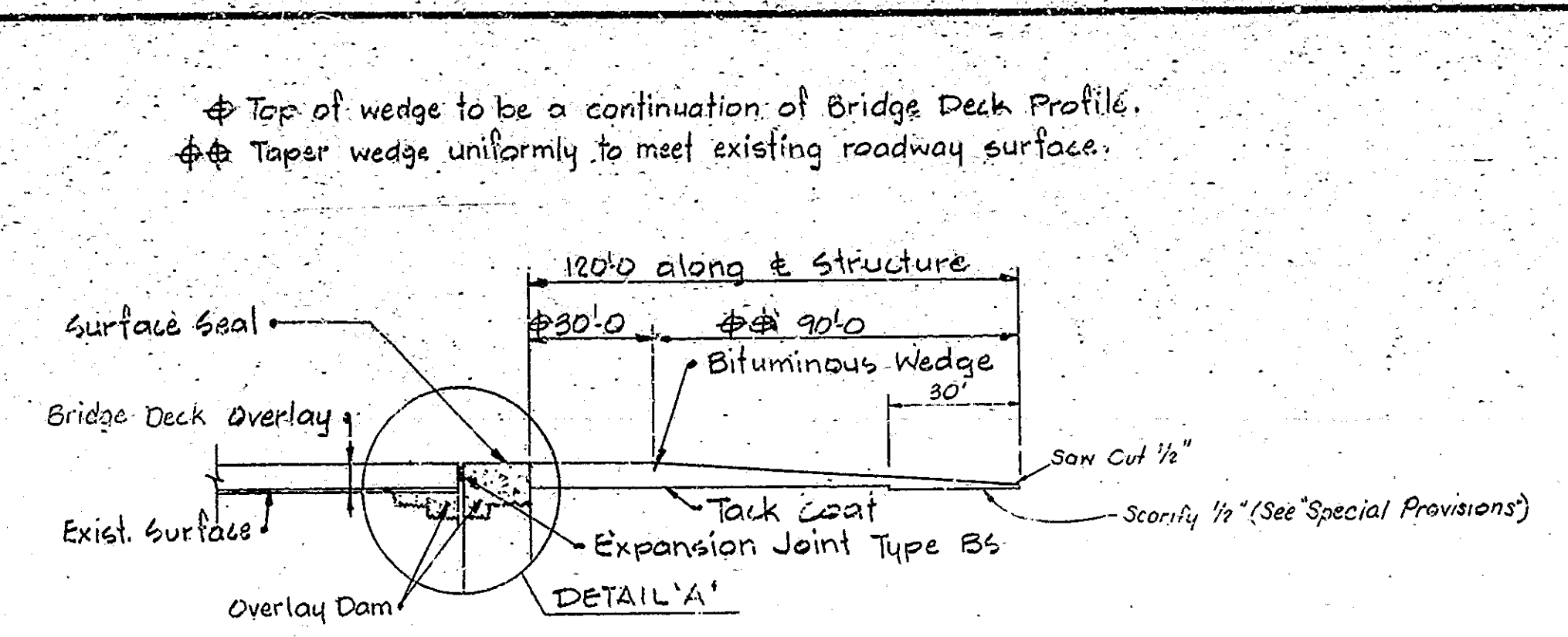
CONTRACT NO. B-12477

BRIDGE FILE: - 48-69-6012A

DESIGNED: S.F.T. C.K.D. R.D.P.  
 DRAWN: S. Jones C.K.D. S.F.T.  
 TRACED: K. GREENE C.K.D. S. Jones

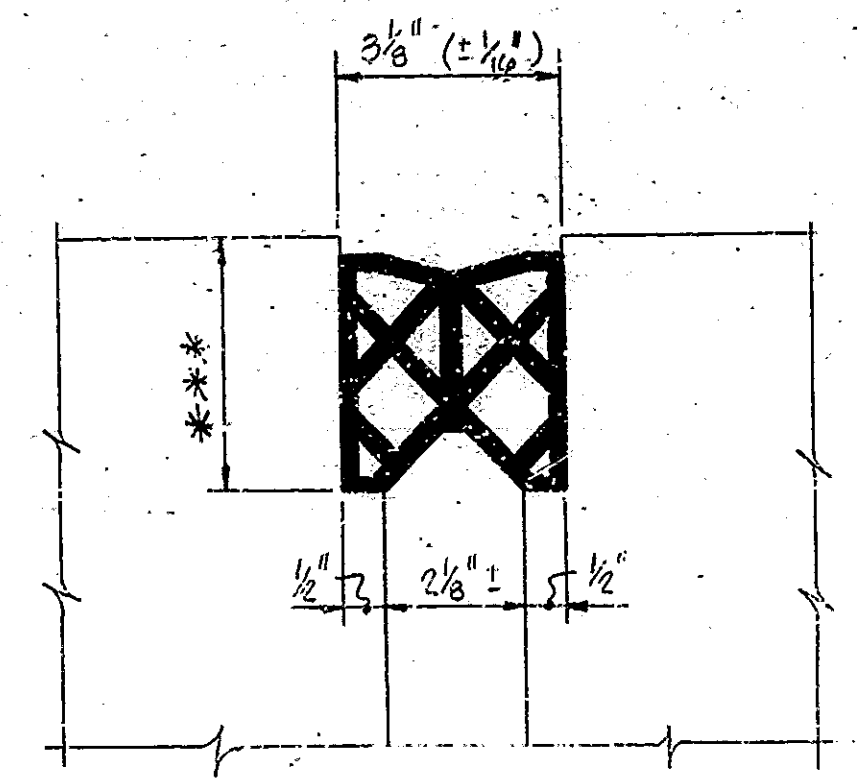
Rev. 6-4-82, bridge deck patching, surface seal limits





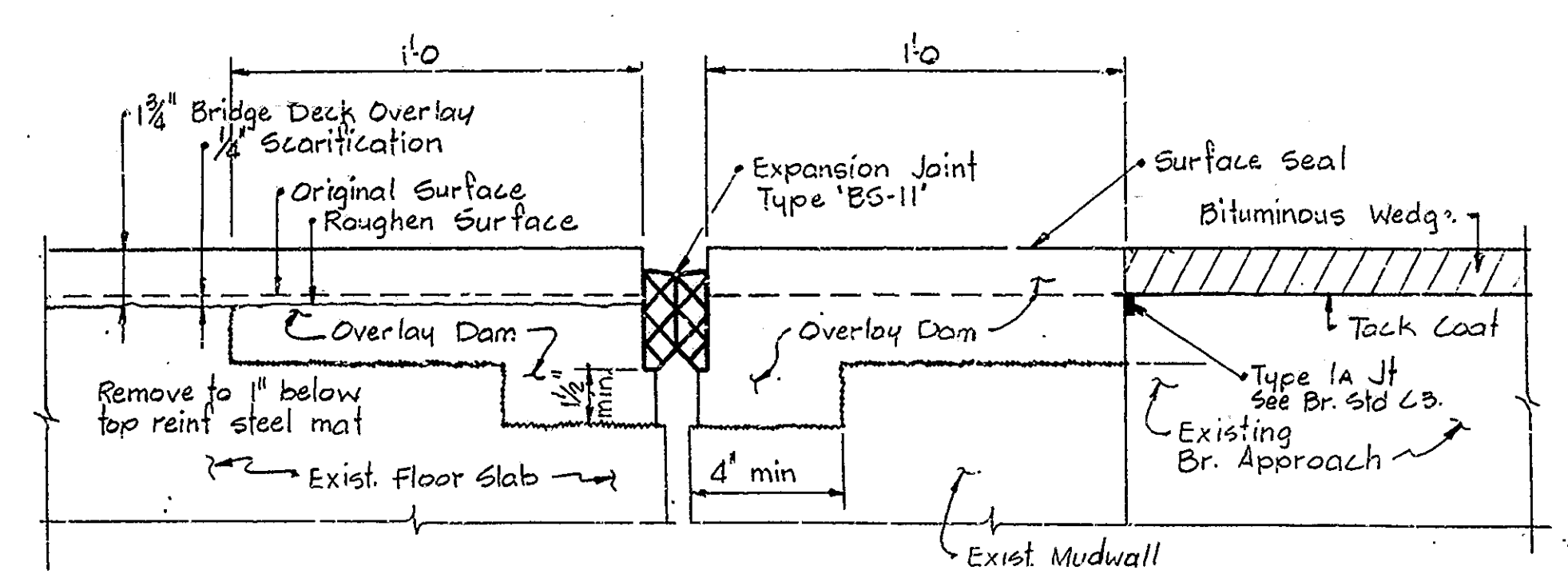
SECTION 'A-A'  
No Scale

Note:  
Seal all joints and cracks in the approach pavement with a hot poured joint sealer before placing the bituminous wedges.

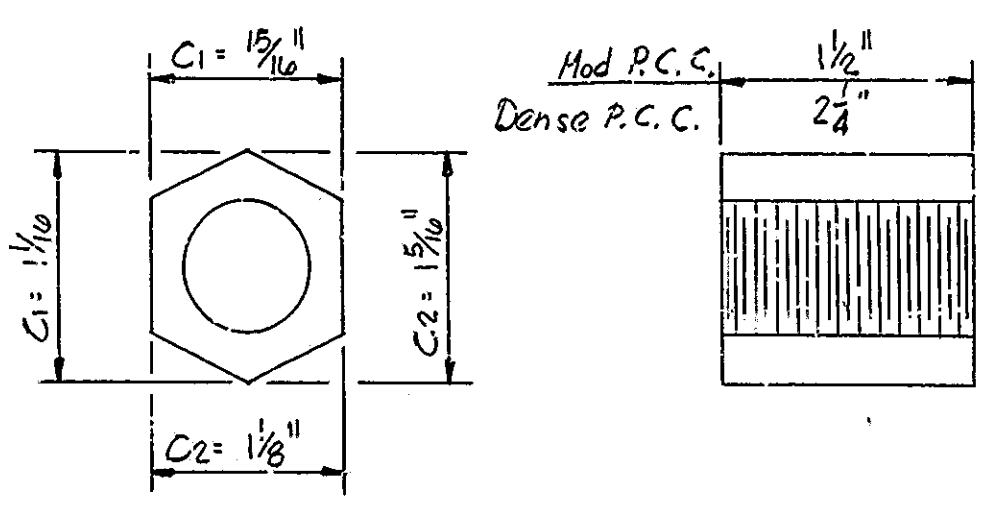


EXP. JOINT TYPE BS-11

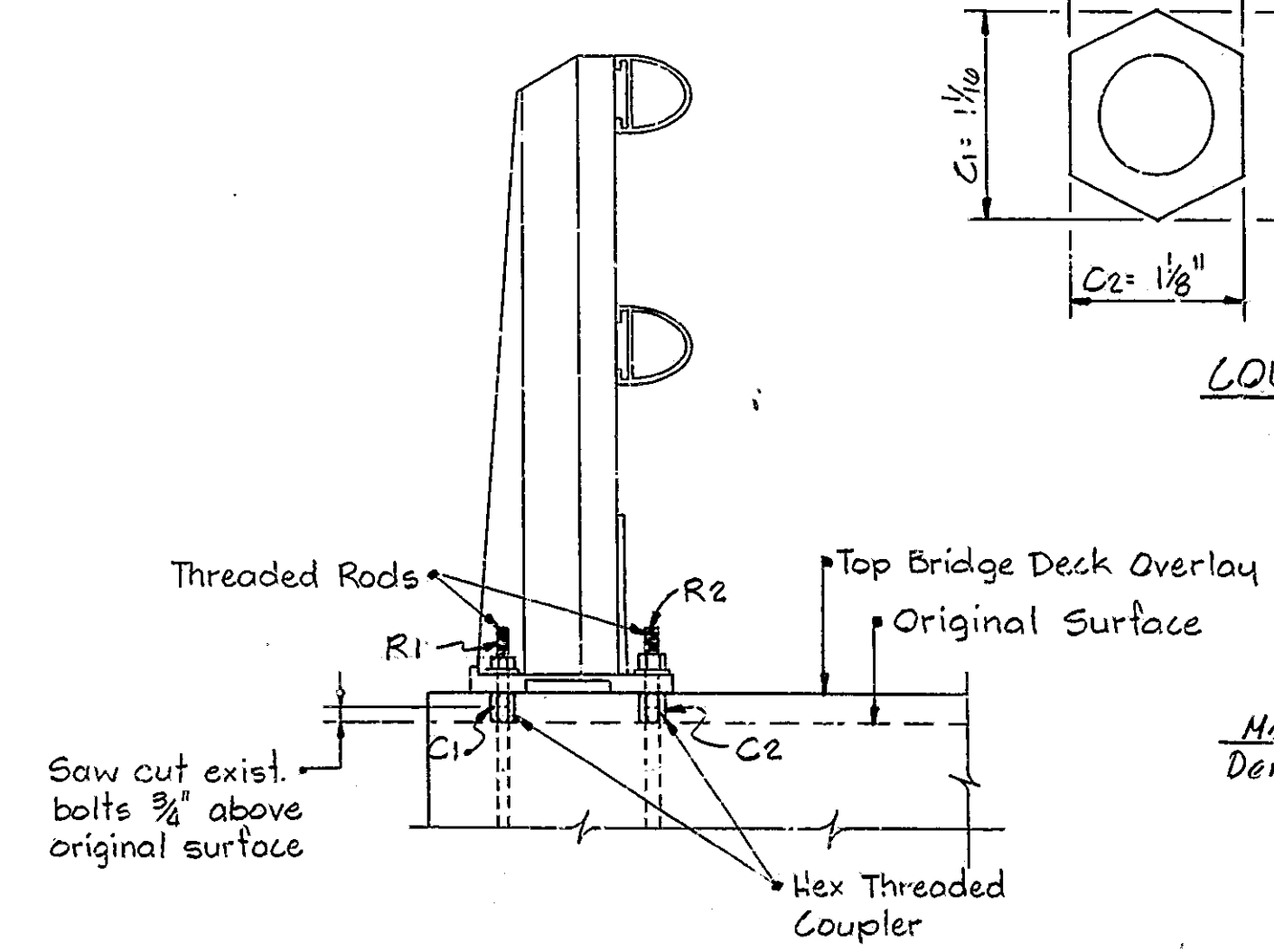
No Scale  
\*\*\* To be determined in the field, see Special Provisions



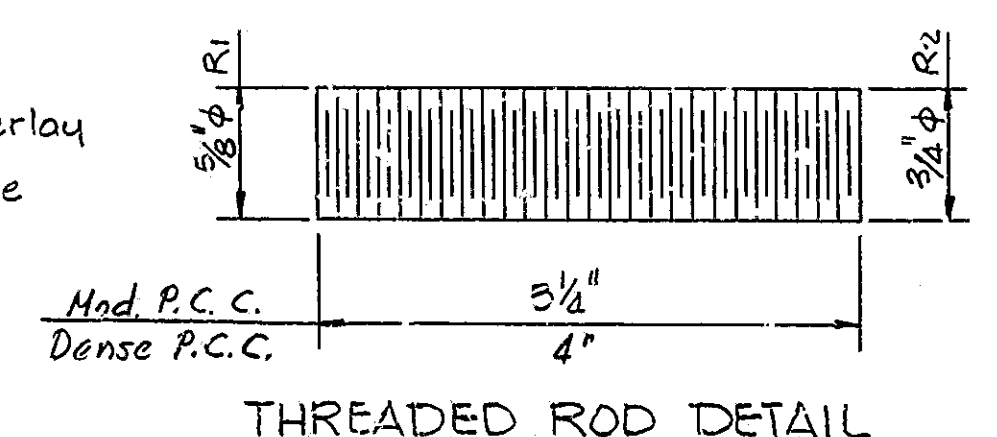
DETAIL 'A'  
No Scale



COUPLER DETAIL



RESET RAILING DETAIL



THREADED ROD DETAIL

Threaded Rod and couplers shall conform to requirements as set out for Anchor Bolts in Specifications Art. 909.20  
The cost of Couplers and Threaded Rods to be included in the cost of 'Railing Reset.'

CONSTRUCTION PROCEDURE

- CLOSE STRUCTURE TO TRAFFIC UNTIL PROJECT IS COMPLETED.
- SCARIFY THE ENTIRE BRIDGE FLOOR TO A DEPTH OF ONE-FOURTH INCH; SCARIFY ADDITIONAL AREAS OF THE BRIDGE FLOOR AN ADDITIONAL ONE-FOURTH INCH AS DIRECTED BY THE ENGINEER. REMOVE SCARIFIED DUST.
- REMOVE ALL DETERIORATED CONCRETE BELOW THE LEVEL OF SCARIFICATION FROM ALL AREAS OF THE BRIDGE FLOOR AND AROUND ALL EXPOSED REINFORCING. REPLACE SEVERELY CORRODED REINFORCING AS DIRECTED BY THE ENGINEER.
- BLAST AND CLEAN ALL REMOVAL AND SCARIFIED AREAS.
- PLACE COUPLERS AND THREADED RODS FOR RAISING BRIDGE RAILING.
- CONSTRUCT OVERLAY DAMS AT BENTS NUMBER 1 AND NUMBER 4.
- PLACE THE BRIDGE DECK PATCHING AND THE BRIDGE DECK OVERLAY AS SHOWN ON THE PLANS AND IN ACCORDANCE WITH THE SPECIAL PROVISIONS.
- RESET GUARD RAIL ADJACENT TO THE BRIDGE RAILING.
- SURFACE SEAL AS SHOWN ON TYPICAL SECTION AND TOP OF APPROACH OVERLAY DAMS.
- RESET BRIDGE RAILING AND GUARD RAIL.
- CONSTRUCT BITUMINOUS WEDGES.
- BREAK PAVED SIDE DITCH TO BERM AND FILL WITH DUMPED RIPRAP.
- REPOINT MASONRY ON PIER NUMBER 2 AND PATCH SPALLED DIAPHRAGMS AT PIER NUMBER 2 AND NUMBER 3.
- OPEN STRUCTURE TO TRAFFIC.

THE NUMBERS DO NOT NECESSARILY INDICATE THE SEQUENCE OF OPERATIONS.

ALL REMOVAL EQUIPMENT USED FOR PARTIAL CONCRETE REMOVALS OF STRUCTURES SHALL BE HAND HELD, PNEUMATIC HAMMERS, 30 LBS. MAXIMUM WEIGHT SHALL BE USED FOR ALL REMOVAL AREAS TO PATCHED AND ALL AREAS WITHIN 24 INCHES OF FULL DEPTH REMOVAL LINES. PNEUMATIC HAMMERS UP TO 90 LBS. MAXIMUM WEIGHT MAY BE USED FOR ALL OTHER REMOVALS OUTSIDE THESE LIMITS. DECK AREAS THAT ARE TO BE REMOVED FULL DEPTH SHALL BE COMPLETELY SEPARATED FROM ADJACENT CONCRETE BEFORE HAMMERS HEAVIER THAN 30 LBS. MAY BE USED.

SUMMARY

CODE	DESCRIPTION	UNIT	TOTAL QUANTITY
51875	Special Class A Concrete	SFT	12
51870	Repointing Masonry in Str.	SFT	40
51890	Expansion Joint Type BS11	LFT	73
51372	Dumped Riprap	Tons	50
	Surface Seal †	LSUM	1
51833	*Concrete Scarifying	Sys	1025
	Full Depth Patching	SFT	100
51837	Blasting and Cleaning	Sys	861'
51838	Finishing and Curing	Sys	869
	Overlay Dams	SFT	146
51842	Bridge Deck Overlay	Sys	869
51843	Bridge Deck Patching	SFT	1557
51132	Railing Reset	LFT	429
52470	Bituminous Mixture for Approaches	Tons	39
52456	Bit. Mat'l. For Tack Coat	Sys	590
06035	Reset Guard Rail	LFT	96
52250	Standard Barricade Type III-A	Each	4
	**Removal of Paved Side Ditch	LFT	110
52340	Construction Sign Type "A"	Each	22
52345	Construction Sign Type "B"	Each	4
06714	Line, Solid, Yellow, 4"	LFT	28,408
06713	Line, Solid, White, 4"	LFT	906

\* Includes 160 square yards for approach scarification.  
\*\* Removed paved side ditch to be used for dumped riprap.

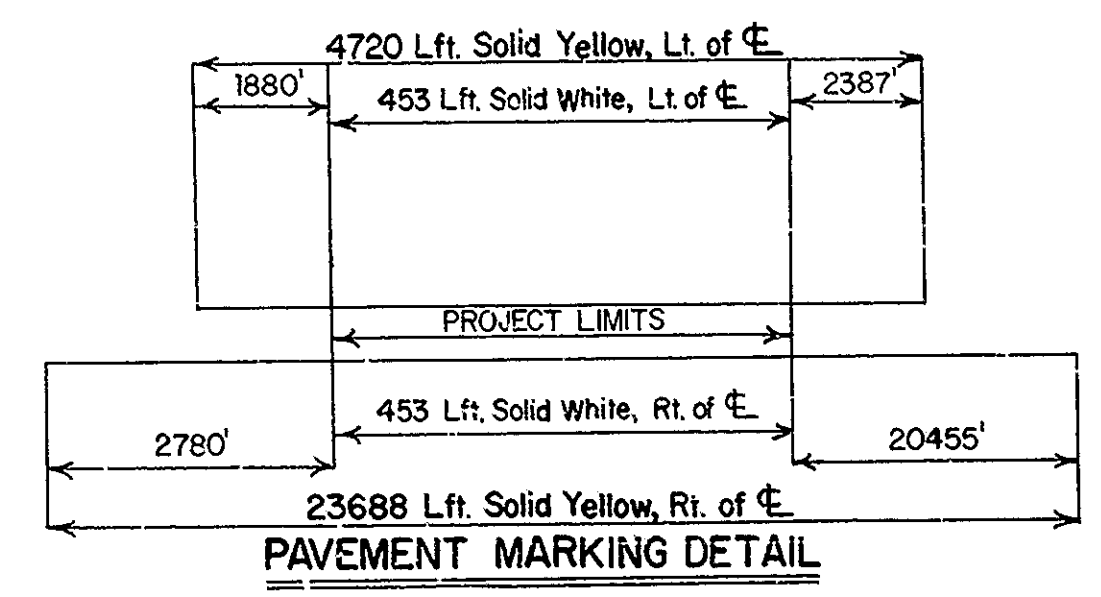
GENERAL NOTES

- PLANS FOR EXISTING STRUCTURE ARE ON FILE IN THE BRIDGE DEPARTMENT, INDIANA STATE HIGHWAY COMMISSION AS BRIDGE FILE NO. 48-69-0012 AND ARE AVAILABLE UPON REQUEST.
- WHERE NEW WORK IS TO BE FITTED TO OLD WORK, THE CONTRACTOR SHALL CHECK ALL DIMENSIONS AND CONDITIONS IN THE FIELD AND REPORT ANY ERRORS OR DISCREPANCIES TO THE ENGINEER AND ASSUME RESPONSIBILITY FOR THEIR CORRECTNESS AND THE FIT OF THE NEW PART TO THE OLD.
- THE HAND CHIPPING AND CLEANING OF DETERIORATED DECK AREAS SHALL BE AS DIRECTED BY THE ENGINEER. IT IS THE INTENT OF THESE PLANS THAT ALL SUCH DETERIORATED CONCRETE BE REMOVED AND SHOULD THERE BE ANY DOUBT AS TO THE QUALITY OF THE CONCRETE, REMOVAL SHALL CONTINUE UNTIL PERFECTLY SOLID CONCRETE IS EXPOSED. ALL EXISTING NON-FULL DEPTH PATCHES SHALL BE REMOVED.
- CONCRETE IN PATCHES FOR DETERIORATED DECK AREAS BELOW SCARIFIED DEPTH SHALL BE MODIFIED PORTLAND CEMENT CONCRETE OR CLASS "A" CONCRETE. SEE THE SPECIAL PROVISIONS.
- ALL BITUMINOUS MATERIAL REQUIRED IN THIS CONTRACT TO BE INCLUDED IN THE PAY ITEM "BITUMINOUS MIXTURE FOR APPROACHES", EXCEPT TACK COAT WHICH IS TO BE PAID FOR AS "BITUMINOUS MATERIAL FOR TACK COAT" IN SQUARE YARDS.
- FOR THE COMPOSITION OF CONCRETE IN OVERLAY DAMS, SEE THE SPECIAL PROVISIONS.
- SEAL ALL EXPOSED CONCRETE SURFACES, AS NOTED ON THE PLANS, WITH A PENETRATING EPOXY SEALER.
- SEAL ALL CRACKS AND JOINTS IN THE APPROACH PAVEMENT WITH A HOT Poured JOINT SEALER BEFORE PLACING BITUMINOUS WEDGES.

MATERIAL NOTES

BRIDGE DECK OVERLAY:  
1 1/2" Modified Portland Cement Concrete Overlay or 2 1/2" Dense Portland Cement Concrete Overlay (See Special Provisions)

BITUMINOUS WEDGE:  
110 POUND PER SQUARE YARD BITUMINOUS SURFACE, TYPE II-B, OVER VARIABLE DEPTH BITUMINOUS BINDER.



† Estimated Quantity of Surface Seal = 695 Sq. Ft.

GENERAL NOTES, CONSTRUCTION PROCEDURE & DETAILS

INDIANA STATE HIGHWAY COMMISSION

SCALE As Noted DATE 6-20-79  
SUBMITTED FOR APPROVAL *Revised*  
DRAWING D2 OF D2 3 OF 14  
PROJECT SR-50693  
CONTRACT NO. B-12497  
BRIDGE FILE 48-69-0012 A



DESIGNED: C.K.D.  
DRAWN: S.C.V. C.K.D. S.F.T.  
INACFD: C.K.D.

Rev 6-4-82, Summary, Note on Removal, Construction Procedure  
Rev 8-23-82, Bridge Deck Overlay note, summary (Std. Barricades)